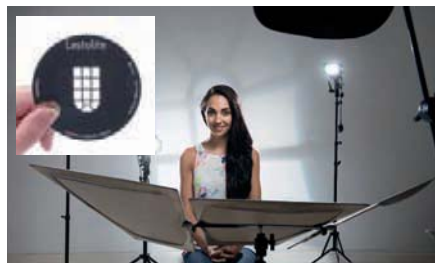


Strobo Gobo

The Strobo Gobo kit allows you to create stunning lighting and background effects using your battery operated flash guns without the need to keep moving locations. The Gobo works with your chosen Strobo Bracket - LL LS2414 + LL LS2611 or LL LS2601. Simply attach the Gobo to your existing bracket and slide in your chosen Gobo mask. The kit comes with two Gobo masks as standard; an arched window and a dappled foliage effect. A range of alternative Gobo masks are available separately. The Gobo holder also takes traditional size B Gobos (86mm). There is even an option to create a slightly 'out of focus' effect.



Features

- ▶ Create different background effects without moving location
- ▶ A range of Gobo masks are available
- ▶ Can be used in conjunction with Strobo gels
- ▶ Also take standard size B Gobos (86mm)

Specifications

Strobo Gobo	Code
Strobo Gobo**	LL LS2625
Gobo Set - Nature*	LL LS2613
	
Gobo Set - Architectural*	LL LS2612
	

*Contains 3 different Gobo's

**Requires Ezbox Hotshoe Plate Adapter LL LS2611 for use with the Ezybox Hotshoe Plate LL LS2414

Strobo Collapsible Snoot

The Strobo collapsible snoot allows you to take maximum control of the light from your battery operated flash guns. Simply attach the snoot directly to your chosen Strobo bracket - LL LS2144 + LL LS2611 or LL LS2601 to create a small concentrated pool of light, ideal as a hair light or to illuminate a small part of your subject. The Strobo snoot instantly transforms the harsh light from your flash gun into an extremely creative light which traditionally could only be achieved using studio flash. For added creativity the Strobo snoot can also be used in conjunction with the Strobo gel system.



Without Strobo Snoot



With Strobo Snoot

Features

- ▶ Unique collapsible design for easy storage
- ▶ Create a controlled pool of concentrated light
- ▶ Can be used in conjunction with Strobo gels
- ▶ Supplied with storage pouch

Specifications

Strobo Collapsible Snoot	Code
Strobo Collapsible Snoot*	LL LS2619

*Requires Ezbox Hotshoe Plate Adapter LL LS2611 for use with the Ezybox Hotshoe Plate LL LS2414

